

MARCH 2024 | PROGRESS SUMMARY Bayside Middle School

Our construction project at Bayside Middle School is continuing to progress, here is what has been happening:

Happening Now

- Gym – Mechanical and electrical systems are nearly complete. Gym is being prepped for paint and finishes.
- District Office – Interior framing and mechanical overhead systems are ongoing.
- Commons Area – Roofing and exterior walls have been completed. Subfloor is being prepped for the last concrete slab pours.
- Classrooms – Windows and exterior insulation have been completed. Painting has begun on second floor!

Looking Ahead

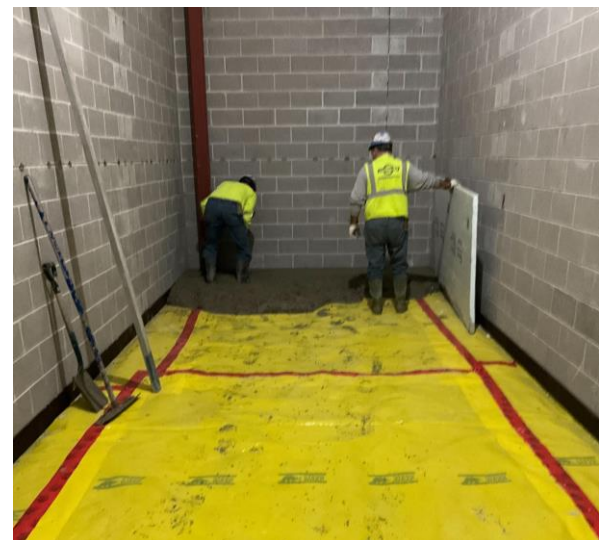
- Gym – Painting will begin at the end of March.
- District Office – Drywall and finishing will begin.
- Commons – Concrete slabs will be poured.
- Classrooms – Painting will continue and ceiling grid will begin.



Final roofing areas were completed this month.



Steel reinforcement for last second floor concrete deck pour.



New music storage room slab being poured.

Construction Questions? Contact Josh Brzezinski | Project Superintendent | Bayside MS | 920-843-2830

Stormonth Elementary School

Happening Now

- Former District Office – Demolition of ceilings and walls and removal of the mechanical and electrical systems are wrapping up this week. The space will be renovated to new large group meeting spaces.

Looking Ahead

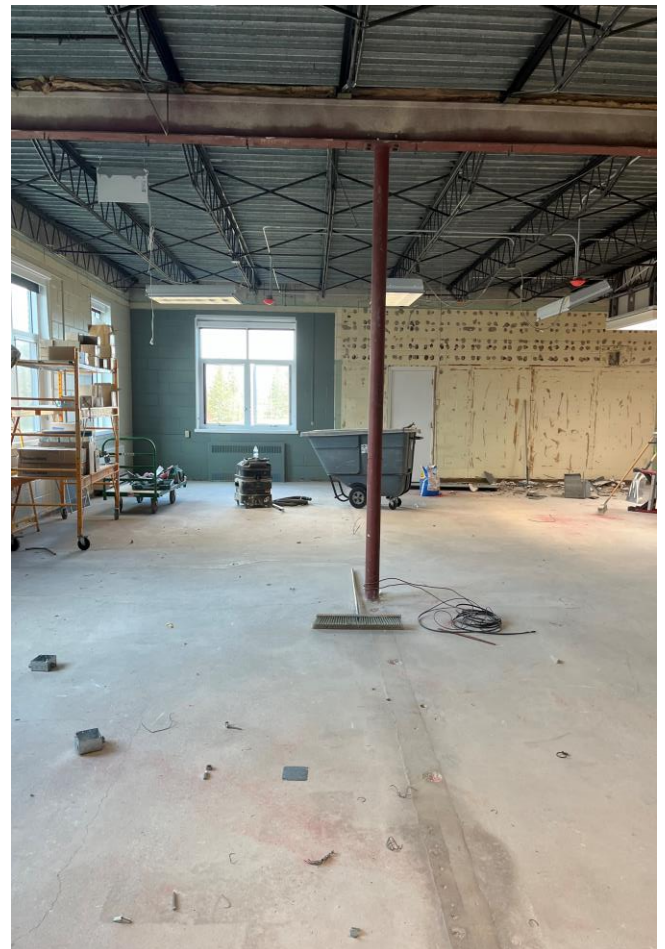
- Former District Office – Framing of new walls will begin next week, followed by mechanical and electrical rough-ins.
- Basement & Attic – Fire alarm rough-ins will be starting in the upcoming weeks.
- Locker Rooms – Demolition will begin during spring break.

Traffic Pattern Changes

As construction progresses at Stormonth, please take note of the following reminders for drop-off and pick-up:

- Morning drop-off on the west end of the school is not available. Buses continue to arrive until approximately 7:40, and we want to ensure the safety of students by avoiding pedestrian traffic in the bus area.
- In addition to using the circle drive for drop-off, there is an alternative drop-off area located south of the circle drive near the playground. This option is ideal for a quick "express" drop-off for children who can exit the car swiftly.
- Additional staff parking is available in the front lot. If your learner requires assistance entering, exiting, or getting buckled into your vehicle, please continue to use this parking area.
- For afternoon car or walk-up circle drive pick-up, ensure that your green student name sign is visible to facilitate a smooth and efficient process.

*Thank you for your continued
cooperation.*



Former District Office wall demolition.